

**JESMONTE**<sup>®</sup>  
MADE FROM

**CRAFTING THE FUTURE OF DESIGN**  
PERFORMANCE & SUSTAINABILITY



# What is Jesmonite?

At its core, Jesmonite is a unique and versatile composite material. Jesmonite serves as a high-performance alternative to traditional materials like cement, glass reinforced concrete (GRC), and plaster, which are commonly used in moulding and casting applications.

Think of it as a building block for creativity, a blank canvas for design innovation. It comes in two parts: a reactive mineral base and a pure water-based acrylic resin. When these two components are combined, they create a material that's remarkably strong, durable, and adaptable.



**What sets Jesmonite apart is its chameleon-like ability to mimic almost any texture, colour, or finish. Whether you're aiming for the rugged look of natural stone, the smooth elegance of polished marble, or the industrial chic of exposed concrete, Jesmonite can deliver it with stunning realism.**





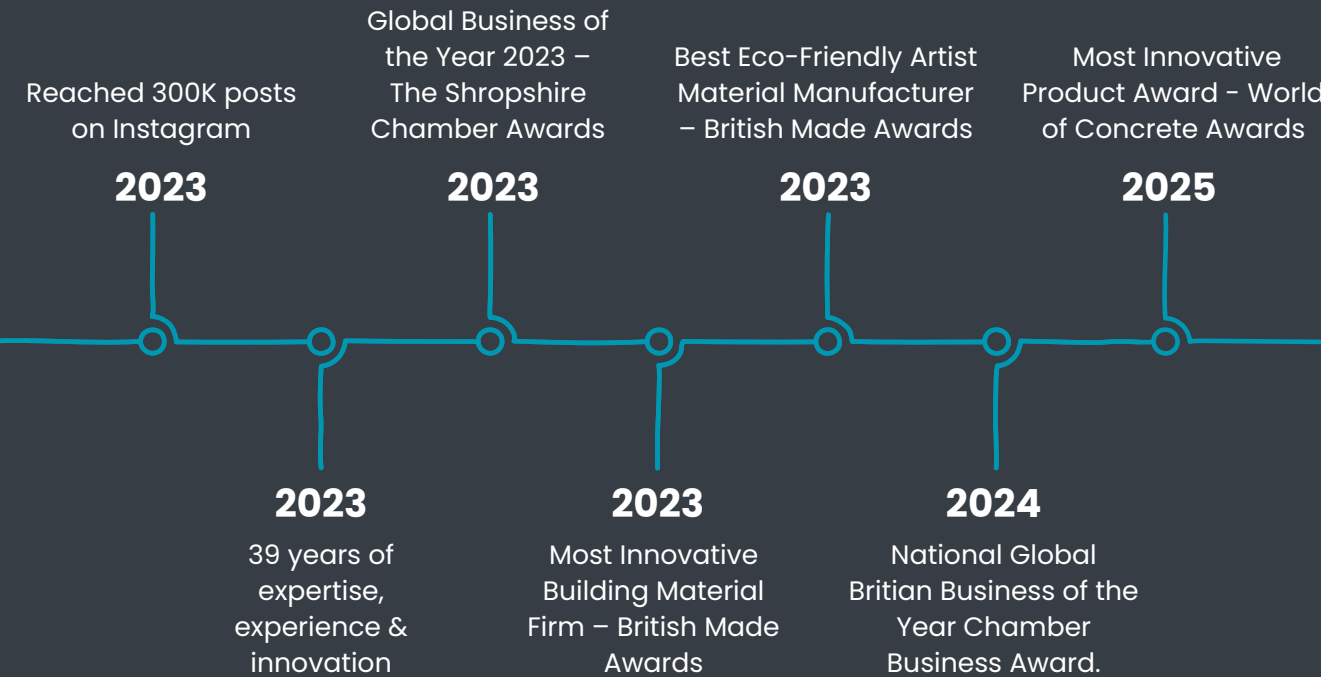
## FROM VISIONARY IDEA TO GLOBAL IMPACT

### THE JESMONITE LEGACY

For over four decades, Jesmonite has been transforming the landscape of design and construction. Born from the innovative mind of Peter Hawkins in the early 1980s, Jesmonite began as a single, groundbreaking product: AC100. Today, that legacy continues, but Jesmonite has evolved into a world-renowned brand, trusted by architects, contractors, and manufacturers across the globe.

More than just a material, Jesmonite represents a commitment to pushing boundaries, embracing innovation, and creating a more sustainable future. From humble beginnings in a small workshop to its use on iconic buildings and breathtaking interiors, Jesmonite has consistently redefined what's possible. Its unique blend of versatility, performance, and environmental responsibility has made it the material of choice for those who demand the very best.

Join us as we explore the endless possibilities of Jesmonite and discover how it can bring your most ambitious visions to life.



**Join us as we explore the endless possibilities of Jesmonite and discover how it can bring your most ambitious visions to life.**



# What Makes Jesmonite Better?

## THE SMARTER CHOICE: WHY JESMONITE OUTPERFORMS THE REST

Let's face it, choosing materials can be a real headache. You're constantly juggling different priorities. Do you go for something that looks great, but weighs a ton and costs a fortune to install? Or something cheap and cheerful, but which ends up looking tired and worn after just a few years? Tradition has us looking at stone, concrete and even some plastics which often force us to make frustrating compromises.

**JESMONITE TEARS UP THE RULE BOOK. IT'S A REVOLUTIONARY COMPOSITE MATERIAL THAT GIVES YOU THE BEST OF ALL WORLDS: INCREDIBLE STRENGTH AND DURABILITY, A SURPRISINGLY LIGHTWEIGHT FEEL, AND A FINISH THAT'S AS STUNNING AS IT IS VERSATILE. PLUS, IT'S KINDER TO THE PLANET. MADE WITH A WATER-BASED, SOLVENT-FREE FORMULATION, JESMONITE HELPS YOU BUILD A BETTER FUTURE WITHOUT SACRIFICING ON PERFORMANCE OR STYLE. IT'S TIME TO DITCH THE TRADE-OFFS AND DISCOVER A MATERIAL THAT TRULY DELIVERS.**





## KEY PRODUCT PROPERTIES

### **STRONGER AND MORE DURABLE**

Resists cracking, impact, and weathering for long-lasting beauty and structural integrity.



### **SAFER AND FIRE-RESISTANT**

Independently fire-rated and solvent-free for safer working environments.



### **ENVIRONMENTALLY RESPONSIBLE**

Water-based formulation, locally sourced ingredients, and reduced plastic packaging for a smaller environmental footprint.



### **LIGHTER THAN TRADITIONAL MATERIALS**

Reduces structural load, simplifies installation, and lowers transportation costs.



### **LIMITLESS DESIGN POSSIBILITIES**

Replicates any texture, colour, or finish, empowering you to achieve your design vision.



### **RAPID SET TIMES**

Accelerates production, reduces mould turnaround, and speeds up project completion.

# For Manufacturers Streamlining Production, Maximising Profitability



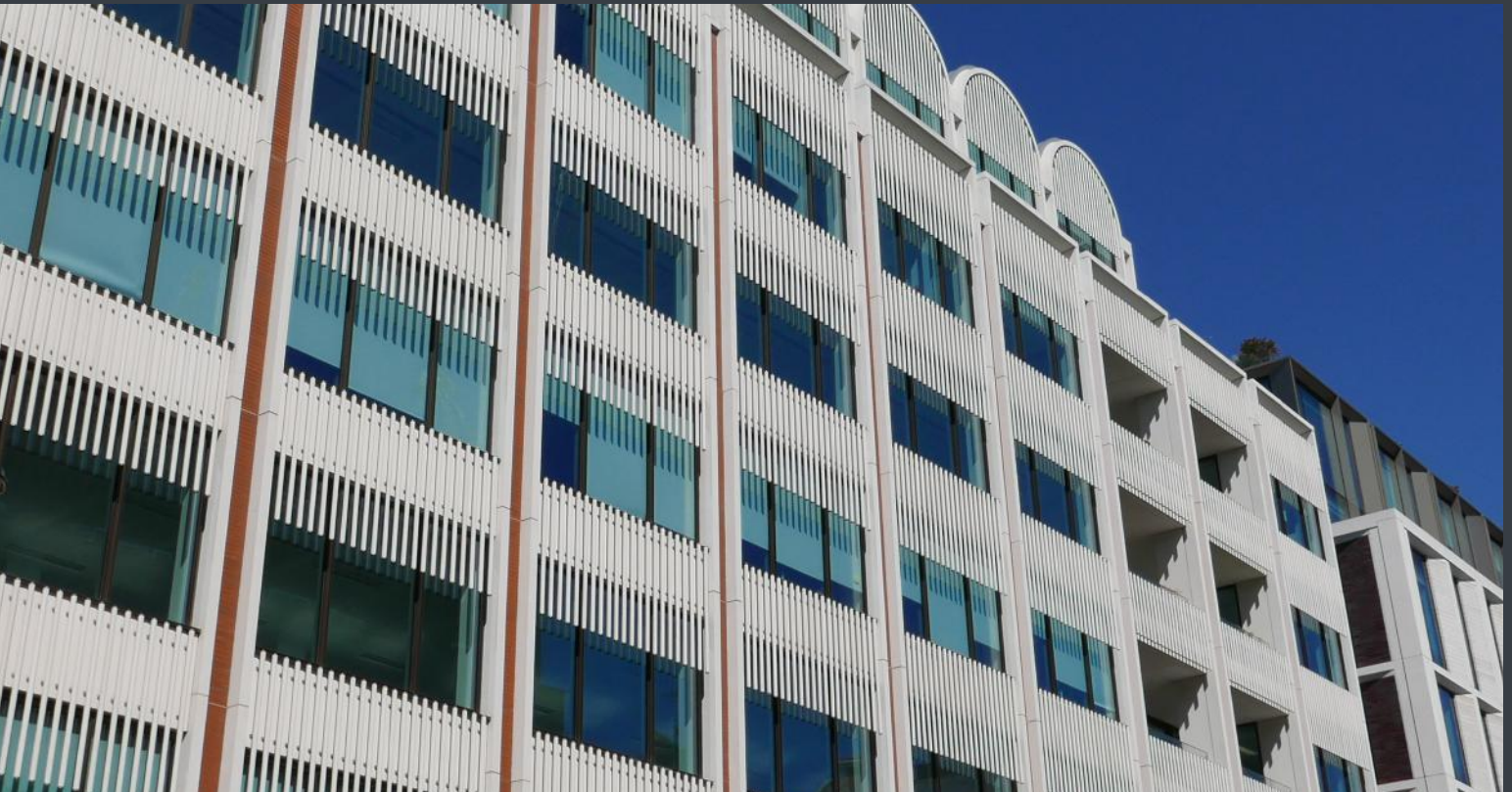
## YOUR COMPETITIVE EDGE IN MANUFACTURING

Running a manufacturing business? You're under constant pressure. Margins are tight, competition is fierce, and customers demand faster turnaround times and flawless quality. The last thing you need is materials slowing you down or causing costly mistakes.

That's where Jesmonite comes in. Forget wrestling with materials that take forever to set or struggling to capture intricate details. Jesmonite is designed for speed, precision, and ease of use. Imagine cycling your moulds three to four times faster than you can with traditional cement products! Imagine the time and labour you'll save with fewer rejects due to imperfections!







## KEY BENEFITS AT A GLANCE

### **RAPID SET SPEED**

Cycle moulds 3-4 times faster than cement or plaster, increasing output and reducing costs.

### **EXCELLENT WEIGHT-TO-STRENGTH RATIO**

Design innovative, lightweight products without compromising strength or durability.

### **INTRICATE DETAIL REPRODUCTION**

Achieve flawless detail in every casting, reducing rework and improving product quality.

### **EASY TO USE**

Simplify production with simple mixing, pouring, and handling procedures.

### **VERSATILE APPLICATION**

Adapt Jesmonite to spraying, pouring, trowelling, and rotocasting for maximum manufacturing flexibility.

### **READY-MADE COLOURS & BESPOKE FORMULAS**

Reduce waste and optimise colour matching with pre-pigmented options and custom formulations.

### **TECHNICAL SUPPORT**

Access expert guidance and support whenever you need it, ensuring smooth production processes.

# For Contractors Building a Reputation for Excellence



## THE CONTRACTOR'S CHOICE FOR QUALITY AND EFFICIENCY

As a contractor, your reputation is built on the quality of your work and your ability to deliver projects on time and within budget. You need materials that are reliable, easy to work with, and provide exceptional results that exceed your clients' expectations.

Jesmonite delivers on all fronts. Its lightweight nature simplifies installation, reducing labour costs and project timelines. Its strength and durability ensure long-lasting performance, minimising callbacks and enhancing client satisfaction. And its versatility allows you to create stunning designs that set your work apart.





## KEY BENEFITS AT A GLANCE

### **LIGHTWEIGHT STONE**

Simplify installation, reduce labour costs, and accelerate project timelines.

### **QUICK ORDER TURNAROUND**

Keep projects on schedule with prompt and reliable material delivery.

### **STRONG, DURABLE, EASY TO HANDLE**

Minimise installation challenges and ensure long-lasting results with a user-friendly material.

### **LONG-LASTING, LOW-MAINTENANCE**

Reduce callbacks and enhance client satisfaction with minimal upkeep requirements.

### **HIGH-QUALITY PRODUCT**

Build a reputation for excellence with superior craftsmanship and exceptional materials.

### **WEATHER AND WATER RESISTANCE**

Provide a durable option for both interior and exterior builds, ensuring lasting performance in any environment.

# For Architects Unleashing Design Innovation



## REDEFINING ARCHITECTURAL POSSIBILITIES

As an architect, you're constantly pushing the boundaries of design, seeking innovative materials that allow you to create unique and inspiring spaces. You need solutions that not only meet your aesthetic vision but also comply with stringent building regulations and sustainability standards.

Jesmonite empowers you to break free from the limitations of traditional materials. Its unparalleled versatility allows you to replicate any texture, colour, or finish, creating truly bespoke designs. Its lightweight nature reduces structural load, allowing for more ambitious and creative structures. And its fire-rated and solvent-free formulation ensures compliance with safety and environmental regulations.





# KEY BENEFITS AT A GLANCE

## UNLIMITED DESIGN POSSIBILITIES

Replicate any texture, colour, or finish, bringing your unique design vision to life.

## LIGHTWEIGHT NATURE

Reduce structural load, create more ambitious structures, and optimise building performance.

## FIRE-RATED & SOLVENT-FREE

Ensure compliance with safety and environmental regulations, creating safer and more sustainable buildings.

## VERSATILE APPLICATIONS

Seamlessly integrate Jesmonite into any architectural style, from modern minimalism to classic ornamentation.

## PARTNERSHIP WITH MANUFACTURERS

Collaborate with a network of experienced fabricators to bring your designs to fruition.

## BESPOKE PANEL CREATION

Offers panel creation to architects designs, for a personalised build.

# For Homeowners Elevating Living Spaces with Style & Sustainability



## CREATE A HOME THAT REFLECTS YOUR VISION

Your home is your sanctuary – a space that should reflect your personality, style, and values. You want materials that not only enhance the beauty and functionality of your living spaces but also align with your commitment to sustainability and environmental responsibility.

Jesmonite offers homeowners the perfect blend of style, performance, and eco-consciousness. Its versatility allows you to create bespoke features that express your unique taste, from stunning wall panels to elegant countertops and eye-catching decorative elements. Its durable, long-lasting results ensure that your investment will stand the test of time, while its eco-friendly composition aligns with your commitment to a more sustainable lifestyle.





# KEY BENEFITS AT A GLANCE

## **UNLIMITED DESIGN POSSIBILITIES**

Craft bespoke features that express your unique style and enhance your home's aesthetic appeal.

## **DURABLE, LONG-LASTING RESULTS**

Invest in materials that stand the test of time, ensuring lasting beauty and value for your home.

## **ECO-FRIENDLY COMPOSITION**

Align with your values of sustainability and environmental responsibility with a material that minimises its impact on the planet.

## **WEATHER RESISTANCE AND LOW MAINTENANCE**

Enjoy long-term cost-effectiveness and minimal upkeep with durable materials that require little maintenance.

## **ELEVATED HOME VALUE**

Enhance the market value of your home with high-quality, sustainable, and visually appealing products.

# Applications and Sustainability Commitment

Jesmonite's versatility unlocks a world of creative possibilities across a wide range of applications

## CLADDING AND FACADES

Lightweight and durable exterior solutions.

## INTERIOR FEATURES

Bespoke wall panels, decorative mouldings, and more.

## SET DESIGNS AND PROPS

Realistic textures and finishes for theatre, film, and theme parks.





### **WATER AND GARDEN FEATURES**

Durable and weather-resistant for outdoor environments.

### **FURNITURE AND LIGHTING**

Unique and stylish pieces for homes and commercial spaces.

### **RESTORATION PROJECTS**

Authentic and load-reducing solutions for historical preservation.

## Environmental Responsibility

At Jesmonite, we are committed to minimising our environmental impact and promoting sustainable practices throughout our operations. We believe that beauty and performance should not come at the expense of the planet. That's why we are constantly striving to develop more sustainable materials and reduce our environmental footprint



## Key Initiatives



### **WATER-BASED FORMULATIONS**

Significantly reduce emissions and minimise environmental harm.



### **LOCAL SOURCING**

Prioritise local suppliers to reduce transportation emissions and support local economies.



### **REDUCING PLASTIC PACKAGING**

Actively replacing plastic with recyclable cardboard alternatives.



### **COMMITMENT TO CARBON NEUTRALITY**

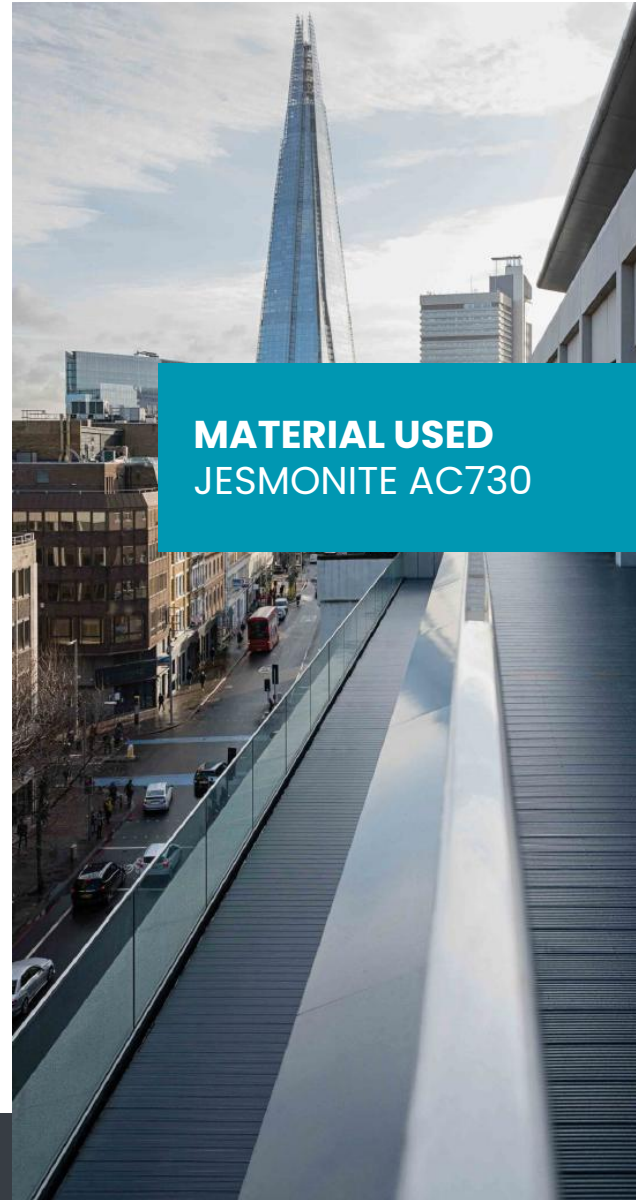
Working towards carbon-neutral status through responsible manufacturing practices.

# Case Studies

## **SIMPLICITY SPECIALIST FINISHES LTD, 61 SOUTHWARK STREET, LONDON (2018)**

This project to revitalise a 1960s office block on London's South Bank clearly demonstrates the ability of Jesmonite to transform a building through lightweight cladding. 61 Southwark Street, an outdated structure, has been refurbished and extended using Jesmonite AC730 cladding panels, giving it a new lease of life.

Approximately 1,500m<sup>2</sup> of vertical and horizontal Jesmonite panels were manufactured and mechanically fixed to the existing nine-storey concrete-framed building, creating a clean, modern aesthetic. Both the architect and main contractor required a bespoke Jesmonite colour match to align with the project's overall colour scheme.



**The AC730 material not only gives us a consistent colour and stone finish, but also allows for quicker de-mould times due to its rapid setting abilities in comparison to traditional concrete materials. Jesmonite AC730 is our material choice for all large scale cladding projects**

Simplicity Specialist Finishes Ltd



This project exemplifies how Jesmonite AC730 can effectively rejuvenate outdated structures through lightweight and durable cladding solutions.





**MATERIAL USED**  
**JESMONITE AC730**

## **PRIVATE RESIDENTIAL PALACE, MIDDLE EAST: ORNATE ELEGANCE (2015)**

This luxurious palace project showcases Jesmonite's ability to meet the exacting standards of elite clients and architects. Designed by Christiano Ferme and manufactured by Stevensons of Norwich, Jesmonite AC730 was the material of choice for crafting ornate architectural elements. The project included Corinthian columns, pilasters, cornices, friezes, balusters, and intricate window and door surrounds.

Jesmonite's bespoke colour-matching service ensured that the material seamlessly met the client's specifications. The palace stands as a testament to Jesmonite's ability to deliver the highest quality mouldings with unparalleled detail and refinement.

**Jesmonite, when combined with our artistic and manufacturing skills, is the ideal material for delivering high definition, fine detail, and the highest quality architectural mouldings.**

Stevensons of Norwich

# Jesmonite is fast becoming Paragon Creative's number one post-coating and laminating material due to its versatility and durability in extreme environments

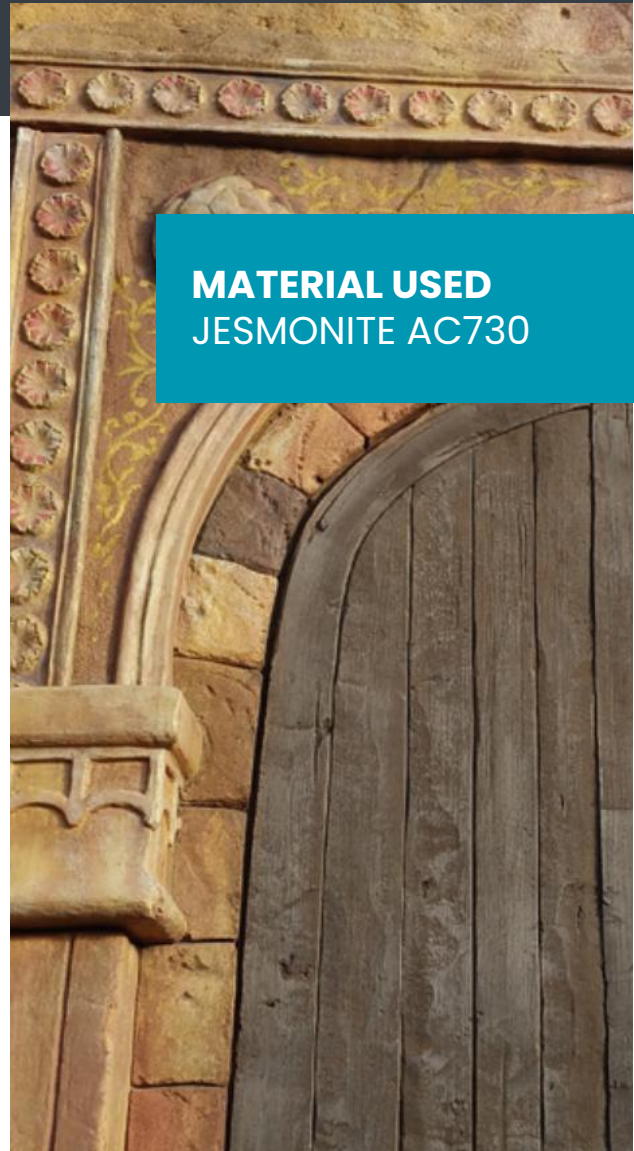
David Bloodworth, Paragon Creative

## ZSL LONDON ZOO: LAND OF THE LIONS (2016)

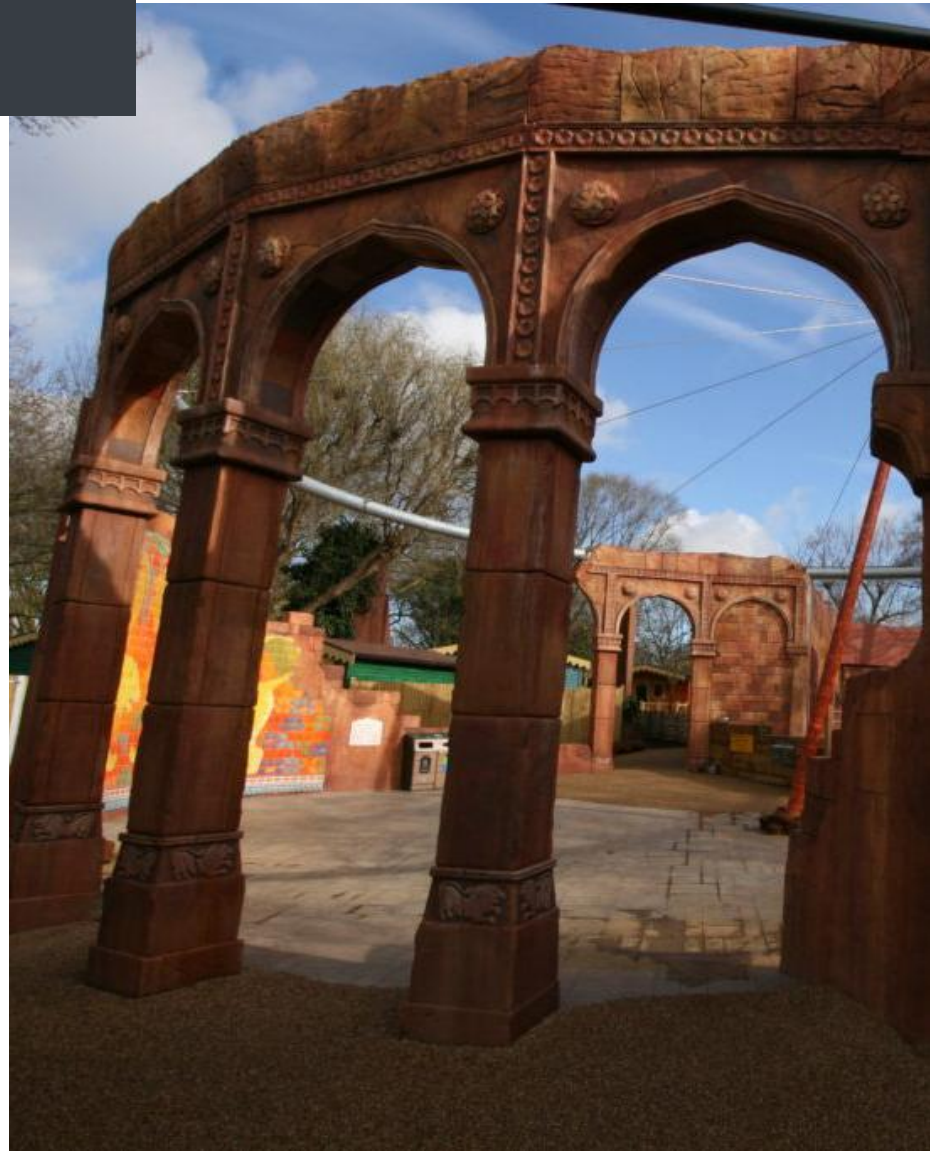
Jesmonite AC730 played a key role in the Zoological Society of London's Asiatic lion enclosure, designed by Ray Hole Architects and Paragon Creative. The attraction recreates an authentic Indian village typical of the Gir Forest, where these endangered lions are found.

The project involved the creation of 85 meters of realistic rockwork to form cliff structures and a 30-meter-long, five-meter-high Indian fort. Jesmonite was chosen for its lightweight properties, ease of installation, and ability to achieve bespoke surface finishes through colour washing and detailed texture replication. The material's durability ensures that the structures can withstand the zoo's outdoor environment while maintaining their authentic appearance.

**MATERIAL USED**  
JESMONITE AC730



Jesmonite AC730 was chosen for its lightweight properties, ease of installation, and ability to achieve bespoke surface finishes, ensuring durability in the zoo's outdoor environment.



Composed of over  
70% raw bronze







**MATERIAL USED**  
AC830 AND FLEX  
METAL GEL COATS



## **SAGA CRUISES** **THE SPIRIT OF DISCOVERY**

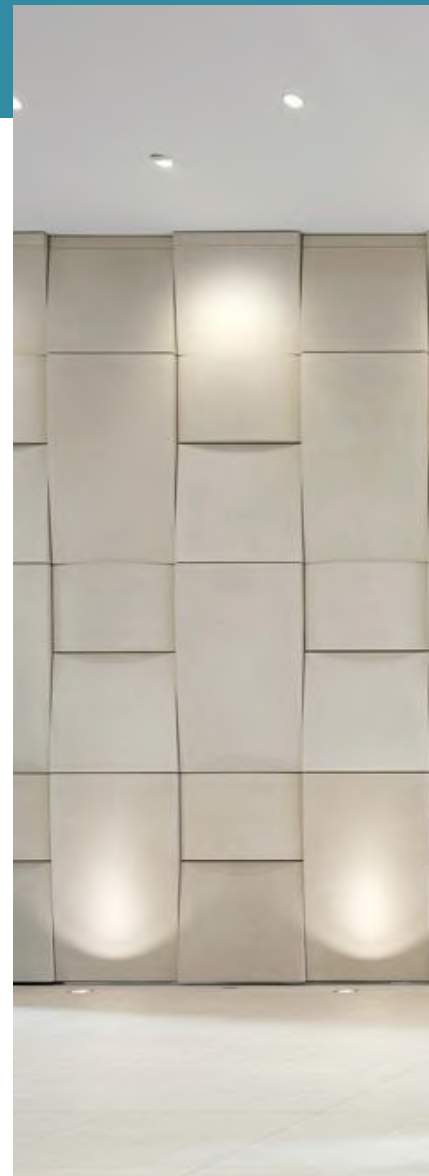
A defining feature of the Spirit of Discovery's luxurious interior is a breathtaking 'bronze' artwork spanning three decks in the ship's atrium. Created by Feathercast, this 12m-high installation celebrates British artists and landscapes through a collage of imagery from across the British Isles.

Jesmonite was chosen for its lightweight, adaptable nature and ability to replicate real bronze with remarkable accuracy. Composed of over 70% raw bronze, the finished piece mimics the texture and luster of traditional bronze while meeting strict maritime regulations. The Feathercast team is immensely proud of this achievement, knowing it will be admired by thousands of guests as the Spirit of Discovery sails for years to come.

**"In the case of the Spirit of Discovery it also meant we were able to meet International Maritime Regulations and also keep the overall weight down which was another important factor when considering the scale of the artwork."**

Emma Pearson - Feathercast

Jesmonite AC730 was selected for its lightweight properties, facilitating efficient installation without heavy machinery and reducing the project's carbon footprint.



The choice of Jesmonite's lightweight materials enabled us to achieve a stunning feature while reducing environmental impact. Its strength-to-weight ratio and non-combustibility were critical in our decision-making

Project Representative

**MATERIAL USED**  
JESMONITE AC730

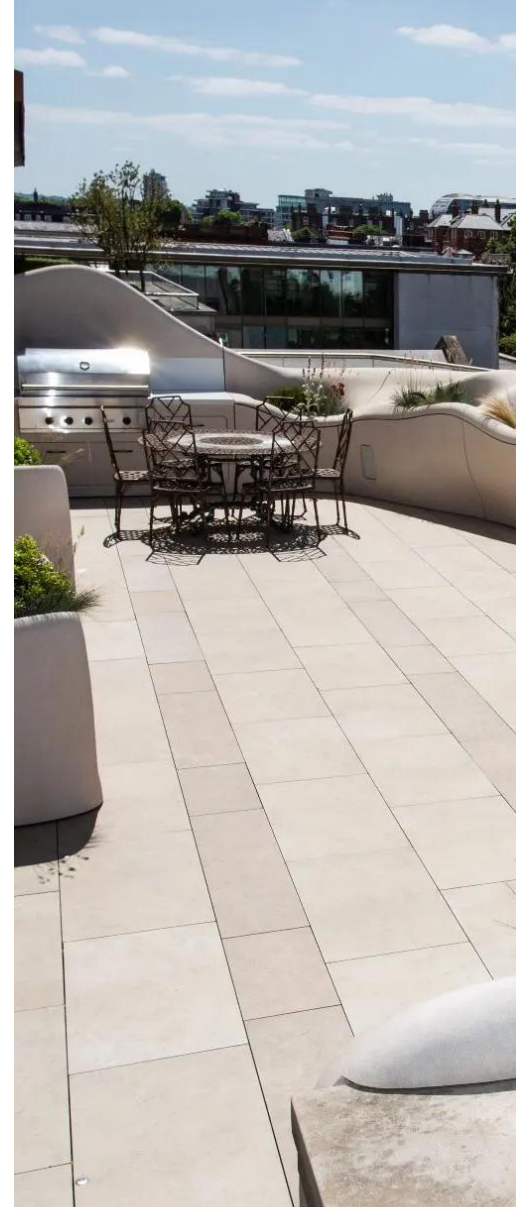


## HSBC HEADQUARTERS, BIRMINGHAM: A SUSTAINABLE STATEMENT (2018)

Jesmonite AC730 was integral to the creation of a striking feature wall at HSBC's British headquarters in Birmingham. Designed by Make Architects, the project aimed to deliver a seamless and elegant cladding system for the building's 200m<sup>2</sup> reception area. The lightweight nature of Jesmonite allowed for efficient installation without heavy machinery, significantly reducing the project's carbon footprint.

Jesmonite's bespoke colour-matching service ensured that the wall complemented the overall aesthetic of the building, while its eco-friendly credentials aligned with HSBC's sustainability goals. The material also met the highest fire safety standards, providing peace of mind for a high-traffic commercial space.

Composed of over 70% raw bronze





**MATERIAL USED**  
AC830 AND FLEX  
METAL GEL COATS

## **PRIVATE RESIDENCE, CHELSEA, LONDON**

Imagine a project with every geometric element completely unique, hand moulded individually and beautifully installed in a prestigious luxury penthouse property in central London.

That is exactly what happened at this project in Chelsea – and all the work resulted in a stunning and striking finish.

Design & Visual Concepts specialise in delivering the highest level specialist interior architectural finishes so the company was delighted to be able to deliver this beautifully sculptured and unique balcony feature. The Jesmonite balcony has a continually curving and asymmetrical 'rockery' design and was installed with integrated planters and barbeque, alongside a unique tiled walkway with a metallic bronze finish.

**“This project was one of the most technically demanding projects we have had the pleasure to work on. It pushed the parameters of practical build and design to the very limits. “We were all incredibly honoured to help deliver this stunning and beautiful balcony design feature for the client.”**

Russell Brewis – Design & Visual Concepts

# Awards and Recognition

**JESMONITE HAS RECEIVED NUMEROUS ACCOLADES FOR SUSTAINABILITY AND INNOVATION, SOLIDIFYING ITS REPUTATION AS A MARKET LEADER.**

 **JESMONITE**   
Proud winners of  
The Queens award for  
International Trade 2022



# The Future is Crafted with Jesmonite

For over 40 years, Jesmonite has been at the forefront of innovation, providing a revolutionary alternative to traditional materials. From humble beginnings, it has grown into a globally recognised brand, trusted by architects, contractors, manufacturers, and homeowners alike. As you've seen throughout this brochure, Jesmonite is more than just a material; it's a solution. A solution to the challenges of balancing aesthetics, performance, sustainability, and cost.

It's the freedom to create without compromise. The confidence of knowing your designs will stand the test of time. And the peace of mind that comes from choosing a material that's kinder to the planet.

Whether you're envisioning a groundbreaking architectural masterpiece, streamlining your manufacturing processes, or creating a home that reflects your unique style, Jesmonite is the material to bring your dreams to life."

## READY TO EXPERIENCE THE JESMONITE DIFFERENCE?

VISIT OUR WEBSITE [WWW.JESMONITEPROJECTS.COM](http://WWW.JESMONITEPROJECTS.COM) TO EXPLORE OUR FULL RANGE OF PRODUCTS, DOWNLOAD TECHNICAL SPECIFICATIONS, AND DISCOVER INSPIRING CASE STUDIES.

CONTACT OUR TEAM AT **01588 630302** OR EMAIL US AT [INFO@JESMONITE.COM](mailto:INFO@JESMONITE.COM) TO DISCUSS YOUR PROJECT AND RECEIVE EXPERT ADVICE.

**REQUEST A SAMPLE:** SEE AND FEEL THE VERSATILITY AND QUALITY OF JESMONITE FOR YOURSELF. REQUEST A SAMPLE KIT TODAY!

**LET US HELP YOU CRAFT A BETTER FUTURE, ONE PROJECT AT A TIME.**





# JESMONITE<sup>®</sup>

MADE FROM

JESMONITE LIMITED  
CHALLENGE COURT  
BISHOPS CASTLE  
SHROPSHIRE  
SY9 5DW  
UNITED KINGDOM

01588 630302  
INFO@JESMONITE.COM